



GENERAL EXPLANATION

This training set is designed to show the working principle of hot water and gas combination used in heating installation.

EXPERIMENTS

1. Investigation of pressure-temperature change
2. Thermostatic valve adjustment
3. Calculation of heating capacity in boiler heater position
4. Calculation of heating capacity in boiler hot water position
5. Boiler control due to water temperature
6. Boiler control due to room temperature

DIMENSIONS

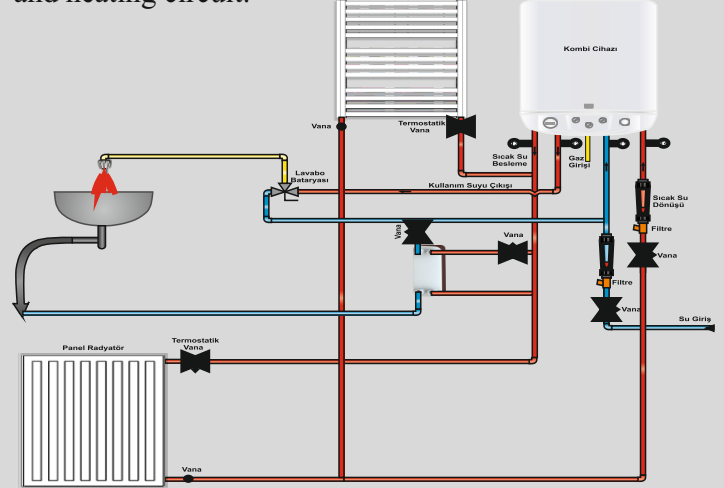
A x B x H : 880 x 640 x 1500 mm

OPTIONAL FEATURES

- Touch LCD Display
- USB Computer Connection
- Computer Control

TECHNICAL SPECIFICATION

There is a radiator with thermostatic valve in the heating circuit of the boiler and a towel with a thermostatic valve. The actual instantaneous heating capacity of the combination can be measured by measuring the inlet and outlet temperatures and the gauges of the hot water and heating circuit.



TECHNICAL DETAILS

- Towel
- Panel radiator
- Cold water flowmeter
- Hot water flowmeter
- Plate heat exchanger
- Temperature measurement from 4 different points
- Digital display combi boiler
- Natural gas / LPG usage option in training set
- Thermostatic radiator inlet valve
- Thermostatic towel inlet valve

PACKAGE INCLUDED

Device, device cover, 1 printed experiment report, circuit diagram and product catalog