



GENERAL EXPLANATION

This training set is designed to introduce the elements of a simple hot water installation and show the connection patterns.

EXPERIMENTS

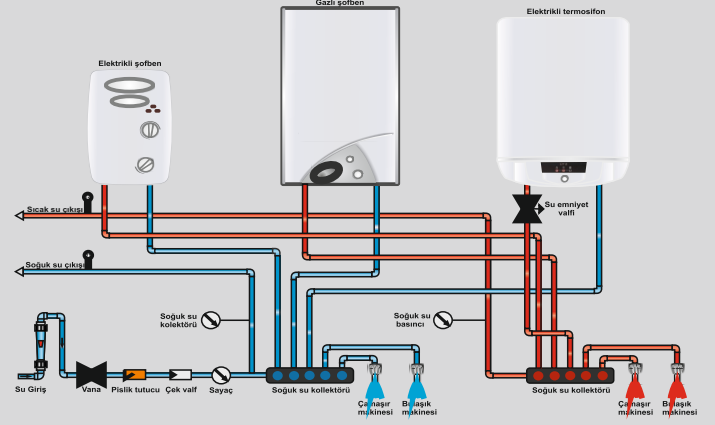
1. Measurement of pressure losses in cold water installation
2. Measurement of pressure losses in electric water heater and hot water line
3. Measurement of pressure losses in gas water heater and hot water line
4. Measurement of pressure losses in electric water heater and hot water line
5. Measurement of the electric heater heating capacity
6. Measurement of Gas boiler heating capacity
7. Measurement of electric water heater heating capacity

DIMENSIONS

A x B x H : 1480 x 750 x 1500 mm

TECHNICAL SPECIFICATION

The training set is equipped with water meter, gas water heater, electric water heater, electric thermosyphon, washing machine connections, dishwasher connections.



TECHNICAL DETAILS

- Rotameter type water flowmeter
- Digital temperature measurement from at least 2 points
- Hot water pressure indicator
- Cold water pressure indicator
- Electric water heater
- Gas water heater
- Electric thermosyphon

OPTIONAL FEATURES

- Touch LCD Display
- USB Computer Connection
- Computer Control

PACKAGE INCLUDED

Device, device cover, 1 printed experiment report, circuit diagram and product catalog